

MIDGET PYRO-LINE BURNERS

MODEL: 3202

Revision: 0

BULLETIN
3202

DESCRIPTION

Midget Pyroline Burners are low capacity, blast, line type units. Flames produced are needle shape in a uniform continuous line.

Ignition between ports and sections is instantaneous. Air-cooled alloy ignition rails are used for excellent flame stability even at high mixture pressures.

Midget Pyroline Burners will operate at mixture pressures up to 40" W. C. and perform best with 70% to 80% aeration, but other air-gas ratios may be used.

Standard sections are 6" long and are available plain or with 3/4 inch side or bottom inlets. Special high temperature gaskets are furnished.



MIXER SELECTION

Air-Gas mixers are rated for 100% primary air. Multiply total capacity of Midget Pyroline Burners selected by 75% (0.75) and select proper mixer at the same air pressure. See Mixer Section 2.

BURNER CAPACITIES - FOR ALL GASES

CAT. NO.	1000 BTU/HR/Section at Various Mixture Pressures 75% Primary Air							
	.5"	2"	4"	6"	8"	10"	12"	16"
6ML-A	7.5	15	21	26	30	34	37	42
6ML-B	12.5	25	35	43	50	56	61	70
6ML-C	25	50	71	86	100	112	122	141
6ML-P	5	10	14	18	20	22	24	28
INLET CAPACITY 3/4" NPT	At 4" W. C. Mixture Pressure 70,000 BTU/HR							
	At 8" W. C. Mixture Pressure 100,000 BTU/HR							

Note: 1.75 ML and 2 ML 1/3 capacity of 6 ML

CAUTION: Operation of combustion equipment can be hazardous resulting in bodily injury or equipment damage. Each burner should be supervised by a combustion safeguard and only qualified personnel should install, make system adjustments and perform any required service.



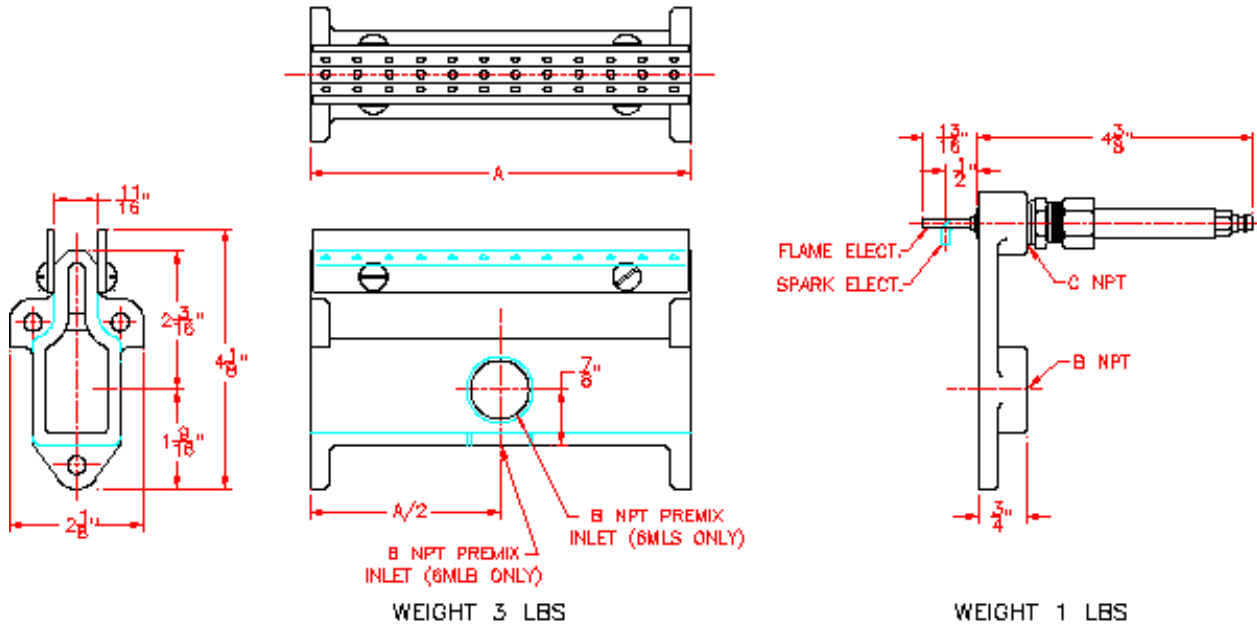
ORDAN THERMAL PRODUCTS LTD
 Combustion Equipment & Controls for Industry
 21 Amber St # 9, Markham Ontario Canada L3R 4Z3
 Tel: (905) 475-9292 Fax: (905) 475-3286
www.ordanthermal.com

NOTICE: Pyronics practices a policy of continuous improvement in the design of its products. It reserves the right to change the specifications at any time without prior notice.

MIDGET PYRO-LINE BURNERS

BULLETIN 3202
PAGE NO. 2

DIMENSIONS



Model No.	Description	A	B	C
1.75 ML	1-3/4" Straight section	1-3/4	-	-
2ML	2" Straight section	2	-	-
6ML	6" Straight section	6	-	-
6MLS	6" Side inlet section	6	3/4	-
6MLB	6" Bottom inlet section	6	3/4	-
MLBF	Blank end flange	-	-	-
MLIF	Inlet end flange	-	3/4	-
MLBF-F	Blank flg. With flame rod	-	-	3/8
MLIF-S	Inlet flg. With spark rod	-	3/4	3/8

Every Section and End Flange includes one special high temperature gasket, and nuts, bolts and lock washers for assembly.

ORDERING INFORMATION

1. Number and style of burner sections required.
2. Number and type of end flanges.
3. If special drilling is required please provide the Capacity, Mixture Pressure and Details for the Application.