

## AM01 Amplifier / TDM01-A Controller Programming

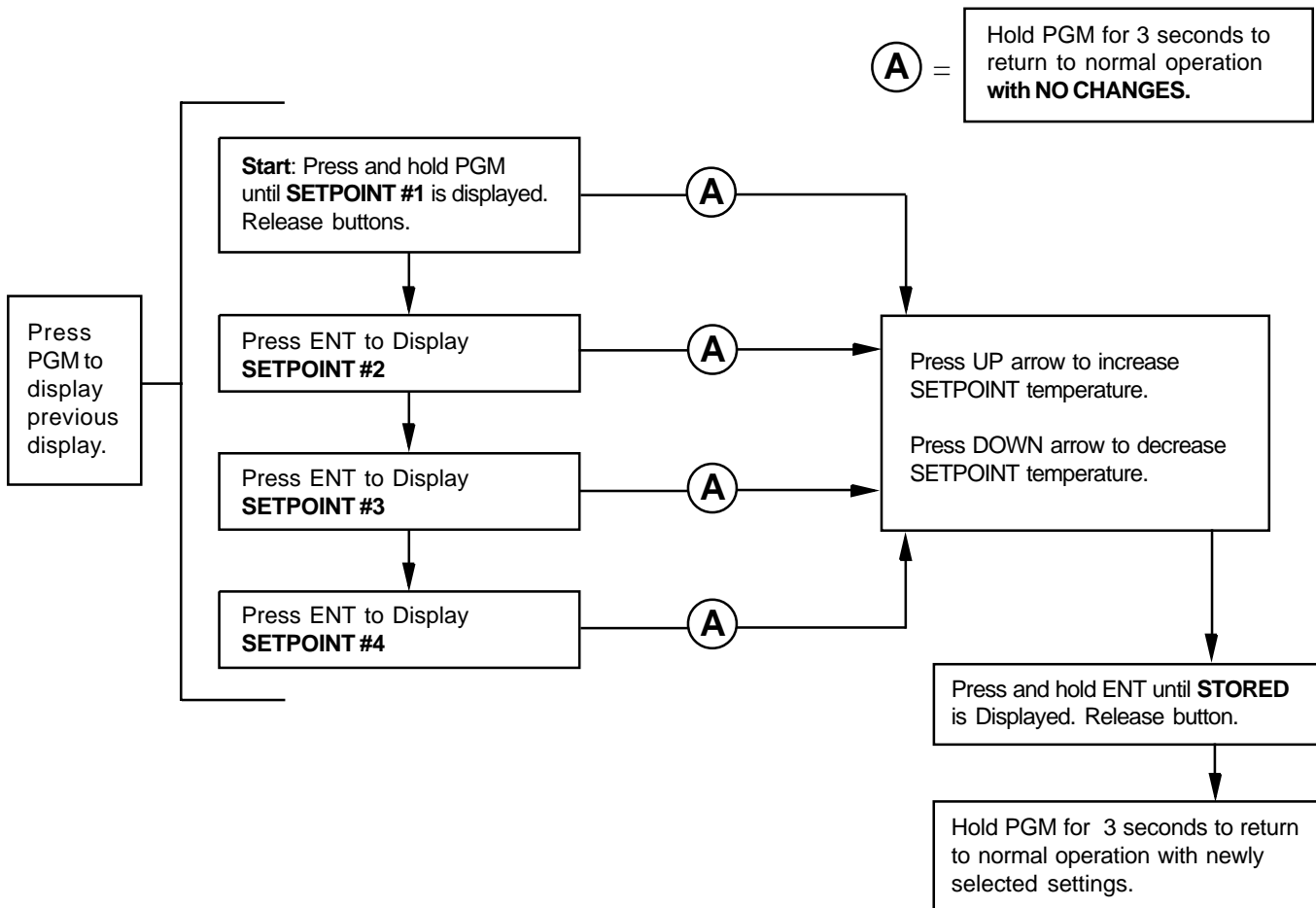
### IMPORTANT: Note 1

- Once programming begins user has 10 seconds between any two key entries. Exceeding the ten seconds may cause the controller to reset to factory default settings.
- After reviewing or editing the program, the PGM key must be pressed and held within ten seconds of the last key pressed to return to normal operation with existing or newly selected values. Failure to do so may cause the controller to reset to the factory default settings.

### Controller Programming Flowchart

#### Setpoints 1 thru 4

(See Note 1)



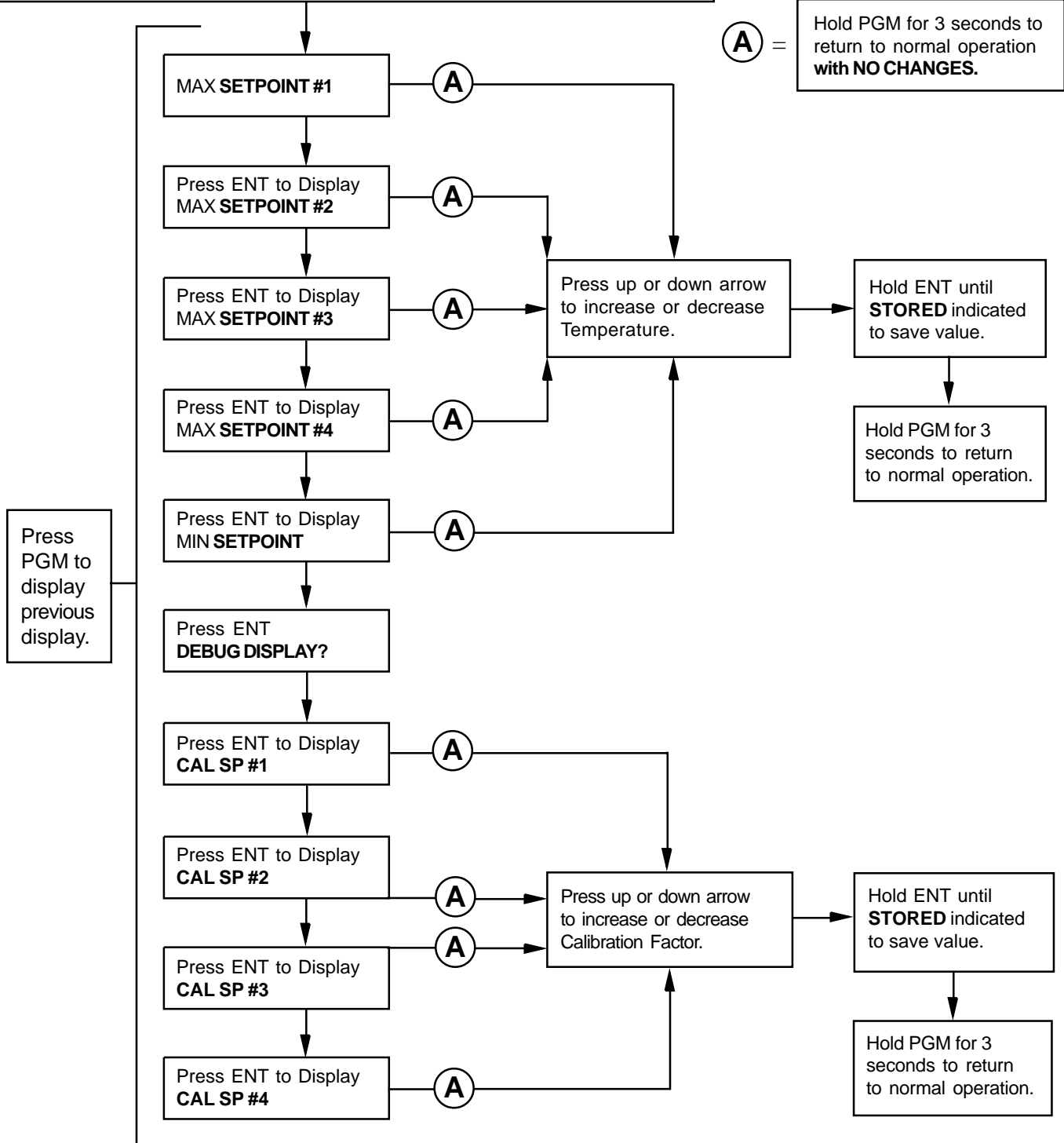


# Controller Programming Flowchart

## Diagnostics

(Important: See Note 1)

**Start:** Press and hold PGM, ENT, and up arrow simultaneously until **DIAG MENU XXX** indicated. Release buttons. The software revision is indicated for 3 seconds.



**CAUTION:** Operation of combustion equipment can be hazardous resulting in bodily injury or equipment damage. Each burner should be supervised by a combustion safeguard and only qualified personnel should install, make system adjustments and perform any required service.



**ORDAN THERMAL PRODUCTS LTD**  
**Combustion Equipment & Controls for Industry**  
 21 Amber St # 9, Markham Ontario Canada L3R 4Z3  
 Tel: (905) 475-9292 Fax: (905) 475-3286  
[www.ordanthermal.com](http://www.ordanthermal.com)

**NOTICE:** Maxitrol practices a policy of continuous improvement in the design of its products. It reserves the right to change the specifications at any time without prior notice.