

Selectra®

SC10C-B6S1 Signal Conditioner

for direct or indirect fired gas applications



DIMENSIONS: 4.75" W x 3.38" H x 2.09" D

The track mounted SC10 can convert a controller's DC output signal of either 4 to 20 milliamps or 0 to 10 volts, to a 0 to 20 volt DC signal. Toggling between 4-20 mA or 0-10 V is achieved with an on-board three position DIP (dual in-line package) switch: 4-20 mA - all positions on, 0-10 V - all positions off.

Selectra® electronic gas flame modulation is a superior alternative to methods such as motor driven butterfly valves. When computer or other process controls are specified instead of standard Maxitrol companion electronic controls, the signal conditioner provides compatibility with Maxitrol modulator / modulator-regulator valves.

Signal conditioners and M/MR valves can be configured for direct or indirect fired applications. They may be field installed on existing equipment or specified for new equipment installation.

The SC10C-B6S1 can replace the SC10-A6S2 or SC10-V6S2.

Modulator and modulator-regulator valves are available up to 5 psi (350 mbar) inlet pressure, 30,000 CFH (850 m³/h) maximum, and pipe sizes from 3/8" to 4". (For additional valve information see Bulletin MT2035, or consult your Maxitrol sales representative)

SC10 output to valve: a milliamp/voltage input corresponds to a voltage output.

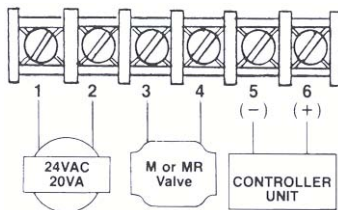
SIGNAL CONDITIONER:

Ambient Limits.....-40° to 150°F (-40° to 66°C)

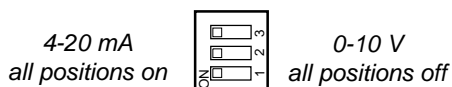
SIGNAL CONDITIONER POWER REQUIREMENTS:

24V AC transformer, 20 VA capacity (50/60 Hz).
(No grounded secondary.)

Wiring Diagram



Three Position DIP Switch



IMPORTANT
READ PRIOR TO INSTALLATION

TO AVOID INTERNAL DAMAGE TO THE SC10 SIGNAL CONDITIONER FOLLOW THESE GUIDELINES:

1. Transformer secondary must not be grounded in any portion of the circuit external to the SC10 signal conditioner. If existing transformer is grounded, a separate isolated transformer must be used.
2. Multiple SC10 signal conditioners controlled by a signal source with common outputs (terminals 5 & 6) require separate transformers for each SC10 signal conditioner (0-10 V input only).
3. Multiple SC10 signal conditioners powered by a single transformer require isolated signal inputs (terminals 5 & 6) to each SC10 signal conditioner.

CAUTION: Operation of combustion equipment can be hazardous resulting in bodily injury or equipment damage. Each burner should be supervised by a combustion safeguard and only qualified personnel should install, make system adjustments and perform any required service.



ORDAN THERMAL PRODUCTS LTD
Combustion Equipment & Controls for Industry
21 Amber St # 9, Markham Ontario Canada L3R 4Z3
Tel: (905) 475-9292 Fax: (905) 475-3286
www.ordanthermal.com

NOTICE: Maxitrol practices a policy of continuous improvement in the design of its products. It reserves the right to change the specifications at any time without prior notice.