

PEEP SIGHTS

MODEL: 5711-PSLT, 5712-PSHT

Revision: 0

BULLETIN
5711, 5712

DESCRIPTION

Low Temperature Peep Sights are of one-piece construction and incorporate thick glass windows. Recommended for use in temperature ranges not exceeding 400 °F. Low temperature peep sights are available in sizes from 3/8" to 1-1/2" pipe.



3 PSLT TO 12 PSLT
LOW TEMPERATURE

DESCRIPTION

High Temperature Peep Sights are of one-piece stainless steel construction and incorporate thick glass windows. Recommended for use in temperature ranges not exceeding 500 °F. They are available in pipe sizes of 3/8" and 1/2".



3 PSHT AND 4 PSHT
HIGH TEMPERATURE

DESCRIPTION

High Temperature Peep Sights are cast iron construction with high tensile glass and high temperature gaskets. Each unit has a 1/4" NPT tapping for cooling air connection. Glass, body, and gasketing are designed for 50 psig service. Maximum temperature at sight port is 700 °F. They are available in pipe sizes of 3/4" to 2".



6 PSHT TO 16 PSHT
HIGH TEMPERATURE

CAUTION: Operation of combustion equipment can be hazardous resulting in bodily injury or equipment damage. Each burner should be supervised by a combustion safeguard and only qualified personnel should install, make system adjustments and perform any required service.



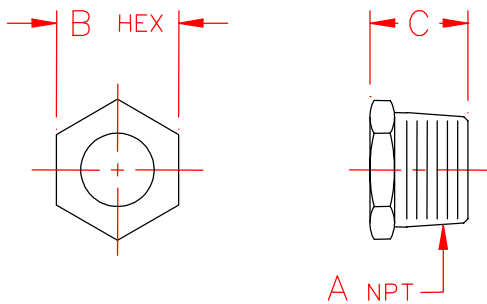
ORDAN THERMAL PRODUCTS LTD
Combustion Equipment & Controls for Industry
21 Amber St # 9, Markham Ontario Canada L3R 4Z3
Tel: (905) 475-9292 Fax: (905) 475-3286
www.ordanthermal.com

NOTICE: PYRONICS practices a policy of continuous improvement in the design of its products. It reserves the right to change the specifications at any time without prior notice.

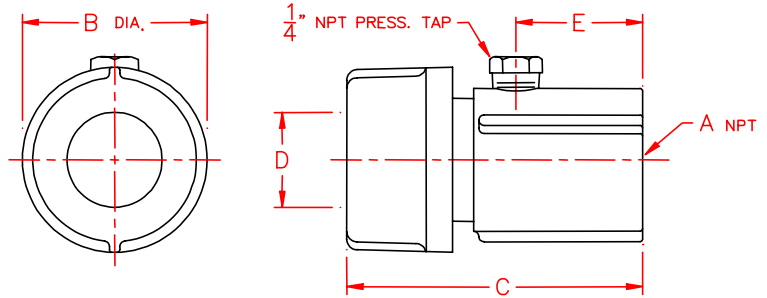
PEEP SIGHTS

BULLETIN
5711, 5712
PAGE NO. 2

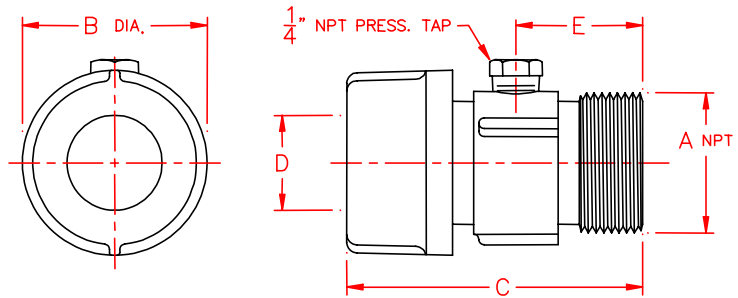
DIMENSIONS



3-12 PSLT
3-4 PSHT



6, 8 & 12 PSHT



10 & 16 PSHT

Model Number	"A" NPT	"B" HEX	"C"	Weight (Lbs.)
3 PSLT	3/8"	3/4"	1.02"	0.04
4 PSLT	1/2"	7/8"	1.02"	0.04
6 PSLT	3/4"	1-1/8"	1.02"	0.04
8 PSLT	1"	1-3/8"	1.02"	0.15
10 PSLT	1-1/4"	1-3/4"	1.02"	0.15
12 PSLT	1-1/2"	2"	1.02"	0.26
3 PSHT	3/8"	3/4"	0.72"	0.04
4 PSHT	1/2"	15/16"	0.88"	0.04

Model Number	"A" NPT	"B"	"C"	"D"	"E"	Weight (Lbs.)
6 PSHT	3/4"	2-3/16"	3-1/2"	1-1/8"	1-1/2"	1.5
8 PSHT	1"	2-3/16"	3-1/2"	1-1/8"	1-1/2"	1.5
10 PSHT	1-1/4"	2-3/16"	3-1/2"	1-1/8"	1-1/2"	1.3
12 PSHT	1-1/2"	3"	3-13/16"	1-3/4"	1-5/8"	2.4
16 PSHT	2"	3"	3-13/16"	1-3/4"	1-5/8"	2.1

ORDERING INFORMATION

1. Specify Quantity and Size of Peep Sights.
2. Specify High or Low Temperature Model Number.
3. Shipping Instructions.